



Where you live is who you are.



LA POSADA
at **Brittany Bay**
Sucot

Your home says a lot about you. That's why La Posada at Brittany Bay, Sucot is the choice of those who have arrived. A wonderfully master-planned community just 15 minutes from Makati and 10 minutes from Alabang. Charming Neo-Victorian houses solidly built on wide lots. Durable materials, elegant finishes, compact layouts, lovely details — hallmarks that will reflect your impeccable taste. The very expression of all the things you've accomplished.

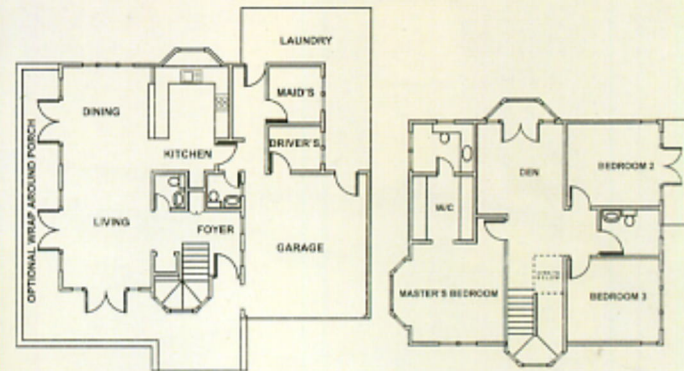
LA POSADA

at **Brittany Bay**
Sucat

Designed to satisfy your exacting standards and reflect your good taste, inside and outside, you can choose from our individual homes, The Manors courtyard homes or Victorianne Row townhomes. And when it comes to details, you'll be pleased to know they include porches that are perfect for relaxing on a lazy afternoon.



Floor Plan of Ellianne Model unit



Ground Floor Plan 132 sqm Second Floor Plan 88 sqm

Gross Floor Area	220 sqm
Minimum Lot Area	260 sqm
Minimum Frontage	17.3 m
Minimum Depth	15 m

SPECIAL FEATURES

- Walk-In Closet for Master's Bedroom
- Bay Windows at Den & Master's Bedroom

For inquiries, please call:

AMENITIES & FEATURES:

- Wired for high-speed internet connection
- High-level security alarm system
- Underground cabling for power communication and CATV
- Multi-purpose hall
- Children's playground
- Game courts
- Swimming pool
- Shower rooms
- Tea garden
- Lily pond

GABRIEL B. PURGATORIO
8387055/0920985888
www.philippinehomes.com.ph

Brittany
CORPORATION

Business Office:
6/F Richville Corporate Tower
Madrigal Business Park, Alabang, Muntinlupa City
e-mail: info@brittany.com.ph
website: www.philippinehomes.com.ph

